



BANDSAW MODEL MA615

OPERATING INSTRUCTIONS

MA615 BANDSAW

1. ASSEMBLE MACHINE AS PER INSTRUCTIONS IN BOOKLET SUPPLIED WITH MACHINE
2. CHECK BLADE IS FITTED CORRECTLY AS ILLUSTRATED IN BOOKLET SUPPLIED WITH MACHINE
3. ENSURE FRONT COVER IS CLOSED - AS YOU WILL NOT BE ABLE TO START THE MACHINE
4. CONNECT MACHINE TO POWER SUPPLY
5. PRESS GREEN BUTTON TO SWITCH MACHINE ON
6. NEVER LEAVE MACHINE RUNNING UNATTENDED
7. GLOVES **MUST NEVER** BE WORN WHEN OPERATING THE MACHINE
8. EAR DEFENDERS MUST BE WORN WHEN CUTTING A PRODUCT THAT PRODUCES A NOISE LEVEL HIGHER THAN 80 DECIBELS
9. IT IS RECOMMENDED THAT MATERIAL LESS THAN 150MM IN WIDTH REQUIRES A PUSHING STICK
10. THE GUARD SHOULD BE PULLED DOWN AS CLOSE AS PRACTICALLY POSSIBLE TO THE WORK PIECE TO PREVENT FRAGMENTS CAUSING HAZARD TO UNGUARDED PEOPLE IN THE VICINITY

RECOMMENDED BLADES

8/12 VARI PITCH BIMETAL BLADES
MOST POPULAR AND VERSITILE BLADE
FOR GENERAL PURPOSE USE
WILL CUT METALS, PLASTICS & WOOD
IDEAL FOR RAISED COMPUTER FLOORS

6TPI BIMETAL BLADES
WOOD, THICK ALUMINIUMS & THICK STEEL

10TPI BIMETAL BLADES
STEEL, CHIP BOARD, COMPOSITE PANELS, ECT

14TPI BIMETAL BLADES
THIN STEEL, PLASTIC, PERSPEX SHEET

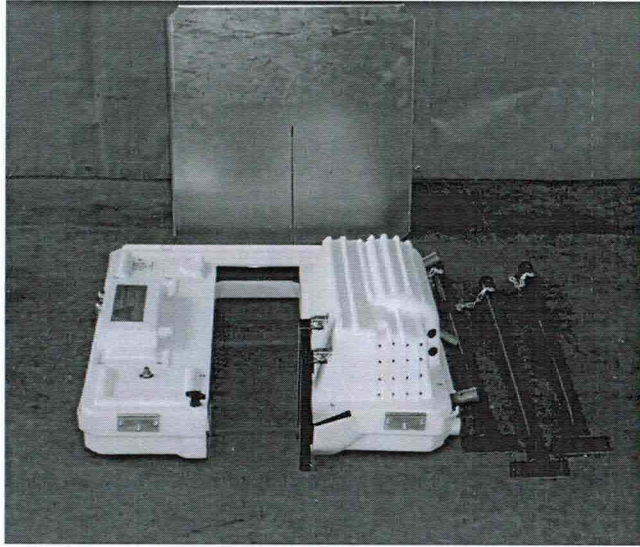
24TPI PREMIUM CARBON BLADE
THIN SHEET STEEL & CEILING PANELS

1/2" GRIT EDGE BLADE
CEMENT, CONCRETE, CERAMIC & GLASS

3/4" GRIT EDGE BLADE
CUTS AS 1/2" BUT THICKER SECTION

3/4" CARBIDE TIPPED BLADE
FOR USE WITH VEY ABRASIVE MATERIALS
SUCH AS CALCIUM COMPOSITES

**TO ASSEMBLE 615.
PLACE MACHINE ON FRONT FACE**



FIT TWO LEGS

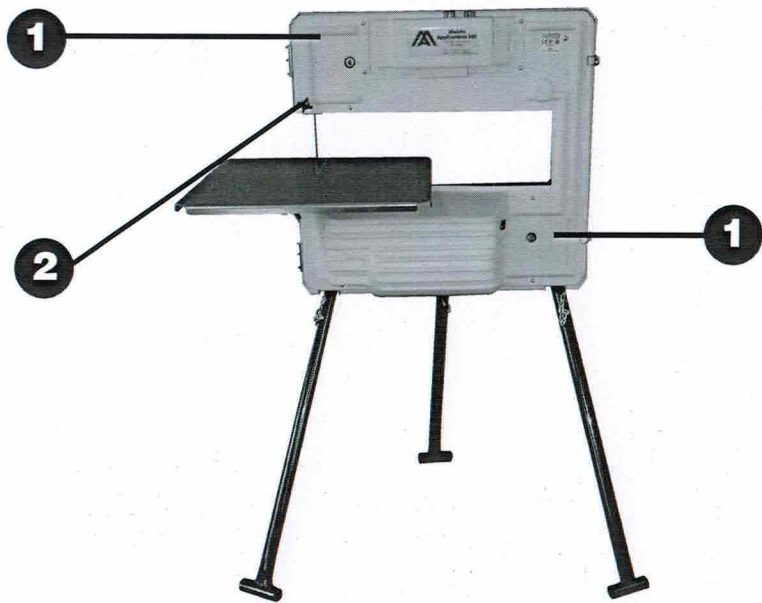


LIFT MACHINE AND FIT FRONT LEGS

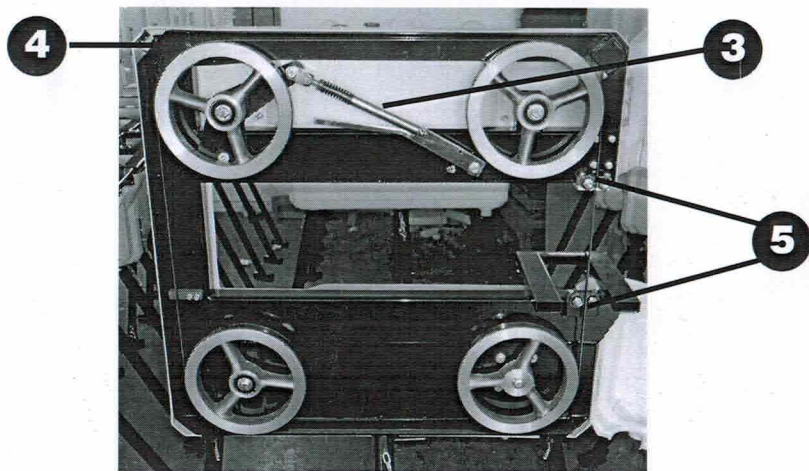


FIT TABLE FROM BACK OF MACHINE



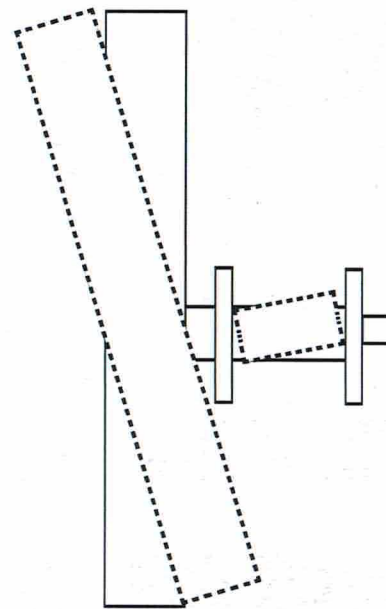


1 = TRACKING SCREWS
2 = ADJUSTABLE BLADE GUIDE



3 = BLADE TENSIONER MA 11
MAX COMPRESSION 40MM
4 = FRONT COVER MICRO SWITCH MA 23
5 = BLADE GUIDE ROLLERS MA 13

TRACKING MA615 BANDSAW

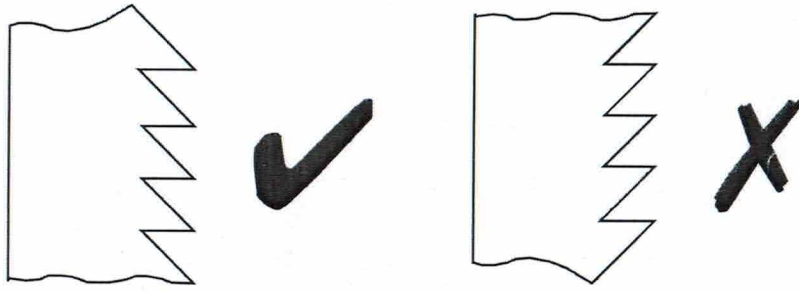


TURN ALLEN SCREW TO
TIP WHEEL BACK OR
FORWARD FOR TRACKING

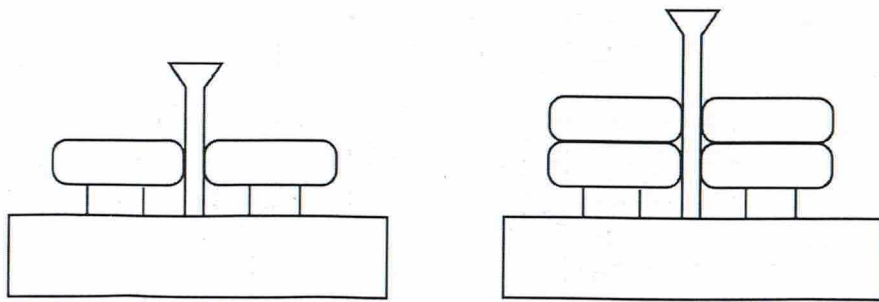
1. STAND AT BACK OF MACHINE
2. CLOSE MICRO SWITCH (4) WITH A SMALL PIECE OF CARD
3. START MACHINE AND TURN ALLEN SCREW (1) LEFT OR RIGHT TO MAKE BLADE RUN TRUE

(THE SCREWS ARE MEANT TO BE OUT OF CENTRE)

WHEN FITTING NEW BLADE, ALWAYS ENSURE THAT THE TEETH POINT DOWNWARDS



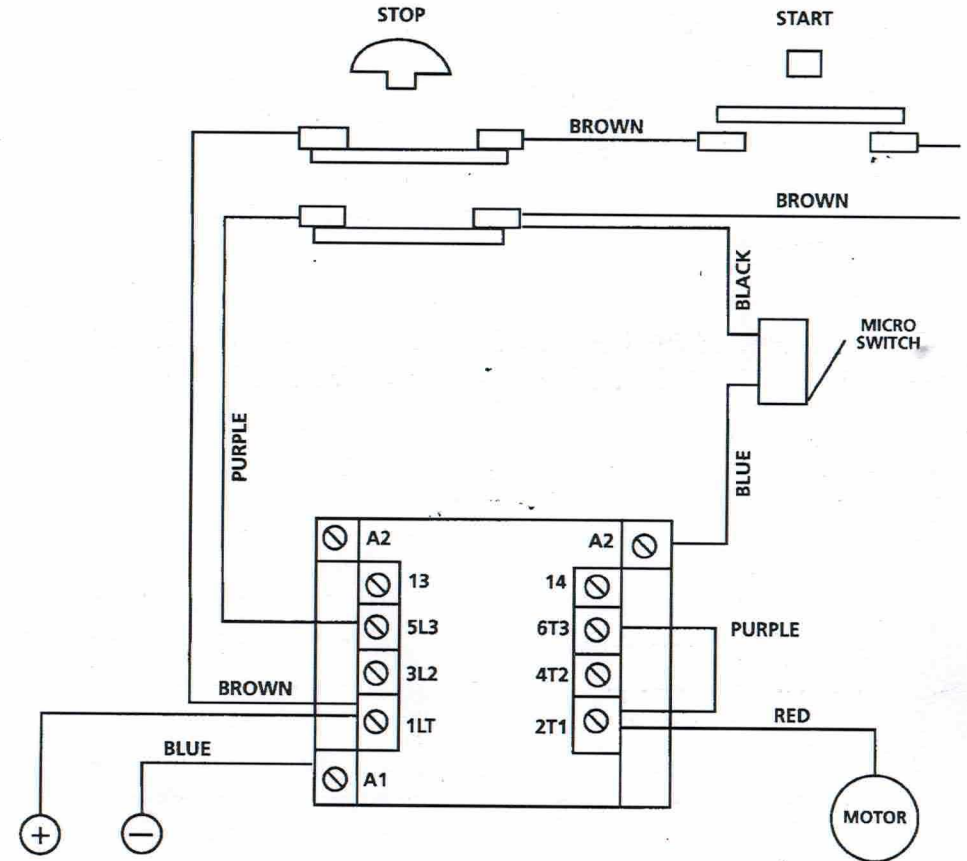
THE MACHINE CAN BE FITTED WITH 3/4" BLADE SIMPLY BY REPLACING ROLLER GUIDE FOR DOUBLE TYPE



STANDARD GUIDE

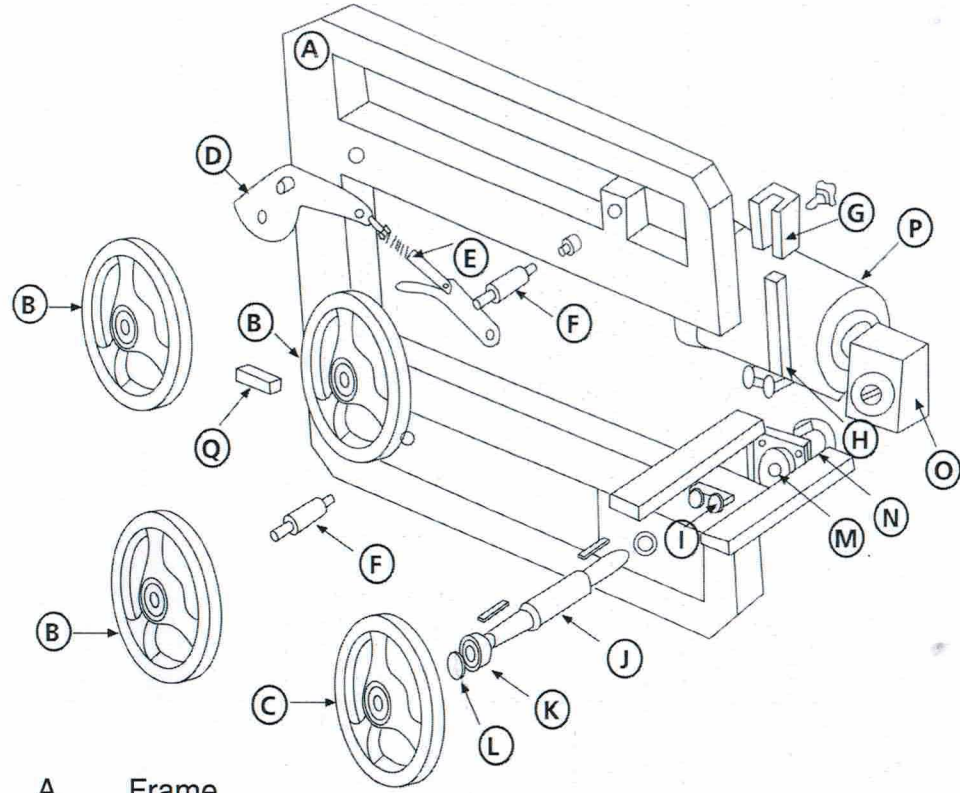
DOUBLE GUIDE

WIRING DIAGRAM



PARTS LIST FOR BANDSAW MODEL MA615.

PART No.	PART DESCRIPTION	PRICE	PART No.	PART DESCRIPTION	PRICE
MA01	MOTOR		MA23	MICRO SWITCH	
MA02	GEARBOX		MA24	COVER HINGES	
MA03	GEARBOX SPACER		MA25	COVER CLIPS	
MA04	DRIVE SHAFT COMPLETE		MA26	BLADE GUARD COMPLETE	
MA05	IDLE SHAFT		MA27	STOP SWITCH TOP	
MA06	DRIVE WHEEL		MA28	STOP SWITCH BASE	
MA07	IDLE WHEEL		MA29	START SWITCH TOP	
MA08	WHEEL BELTING		MA30	START SWITCH BASE	
MA09	WHEEL BEARING		MA31	MOTOR CONTACTOR	
MA10	WHEEL CIRCLIPS		MA32	CAPACITOR	
MA11	TENSION ASSEMBLY		MA33	MALE PLUG WITH LEAD	
MA12	SWINGING ARM		MA34	110 VOLT PLUG	
MA13	BLADE GUIDE ROLLERS 2 OFF		MA35	ADJUSTING SPRING	
MA14	BLADE GUIDE BLOCKS 1 OFF		MA36	WHEEL SPACER	
MA15	BLADE GUIDE ADJUSTERS 2 OFF				
MA16	BACK RUB BLOCK				
MA17	TABLE				
MA18	TABLE CATCH				
MA19	TABLE CLIPS				
MA20	LEGS (PER SET)				
MA21	FRONT COVER				
MA22	REAR COVER				



- A. Frame
- B. Idle Wheel MA07
- C. Drive Wheel MA06
- D. Swinging Arm MA12
- E. Tension Assembly MA11
- F. Idle Shaft MA05
- G. Blade Guide Adjuster Block
- H. Top Blade Guide
- I. Bottom Blade Guide
- J. Drive Shaft MA04
- K. Bearing MA09
- L. Spacer
- M. Gearbox Locator
- N. Gearbox Spacer MA03
- O. Gearbox MA02
- P. Motor MA01
- Q. Back Rub Block MA16

UK CONTACT DETAILS

Tel 01782 790824

Fax 01782 790825

Email sales@mobileapplicationsltd.com

www.mobileapplicationsltd.com

US CONTACT DETAILS

Tel/Fax 0012 014 937 191

Email lynchcheryl3@aol.com